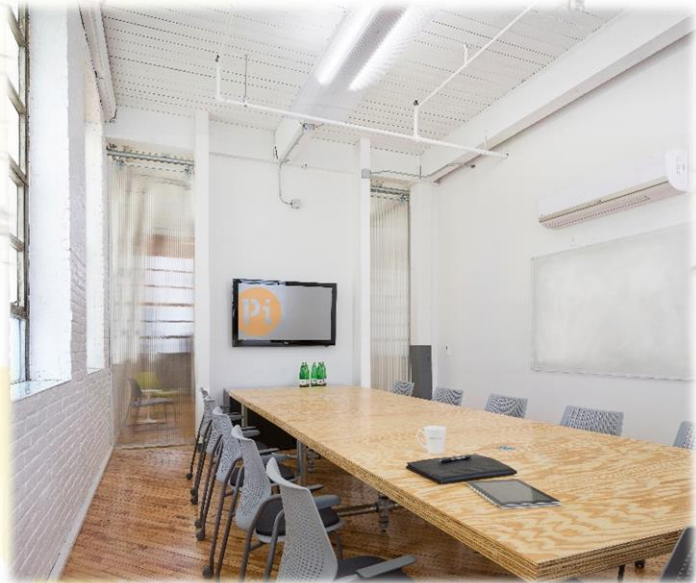




# partnership for innovation



## **Suite 6 - 285 sq. ft. available!**

520 Evans St. Bethlehem, PA - 2<sup>nd</sup> Floor

Rent = \$12.50/sq. ft. Full Service

Extremely affordable location

Free off-street parking available to company employees

Collaborative and energetic environment with other startups

Loft-style start-up space in tech-savvy Southside Bethlehem

Industrial-vibe (vintage hardwood floors, exposed brick, etc.)

SteelStacks campus is located within 2 blocks of the Pi building

In the heart of the Southside Arts & Business District

Location is near Lehigh University, Northampton Community College (NCC),

Moravian College, and Ben Franklin Technology Partners

Prototyping opportunities available at [NCC Fab Lab](#)

\*\*\*Within the boundaries of the lucrative [Keystone Innovation Zone \(KIZ\)](#)\*\*\*

The [Southside Bethlehem KIZ](#) was created by the Commonwealth of Pennsylvania in 2004 and is currently administered by the Bethlehem Economic Development Corporation (BEDCO). Companies that are located within the geographical boundaries of the KIZ, have been in operation for less than 8 years and are considered to be in one of the targeted business sectors may be eligible to qualify for incentives. Financial incentives include: \$15,000 Technology Transfer Grants, \$2,500-\$3,750 for Student Internships and up to \$100,000 in annual KIZ Tax Credits. In addition to serving as a possible funding source, the KIZ has been integral in fostering a “knowledge neighborhood” within Southside Bethlehem.

### **Interested? Contact Us!**

If you are interested in space or want to learn more about the KIZ, contact Asher Schiavone, Economic Development Coordinator for the City of Bethlehem  
(610) 865-4347 [ASchiavone@bethlehem-pa.gov](mailto:ASchiavone@bethlehem-pa.gov)